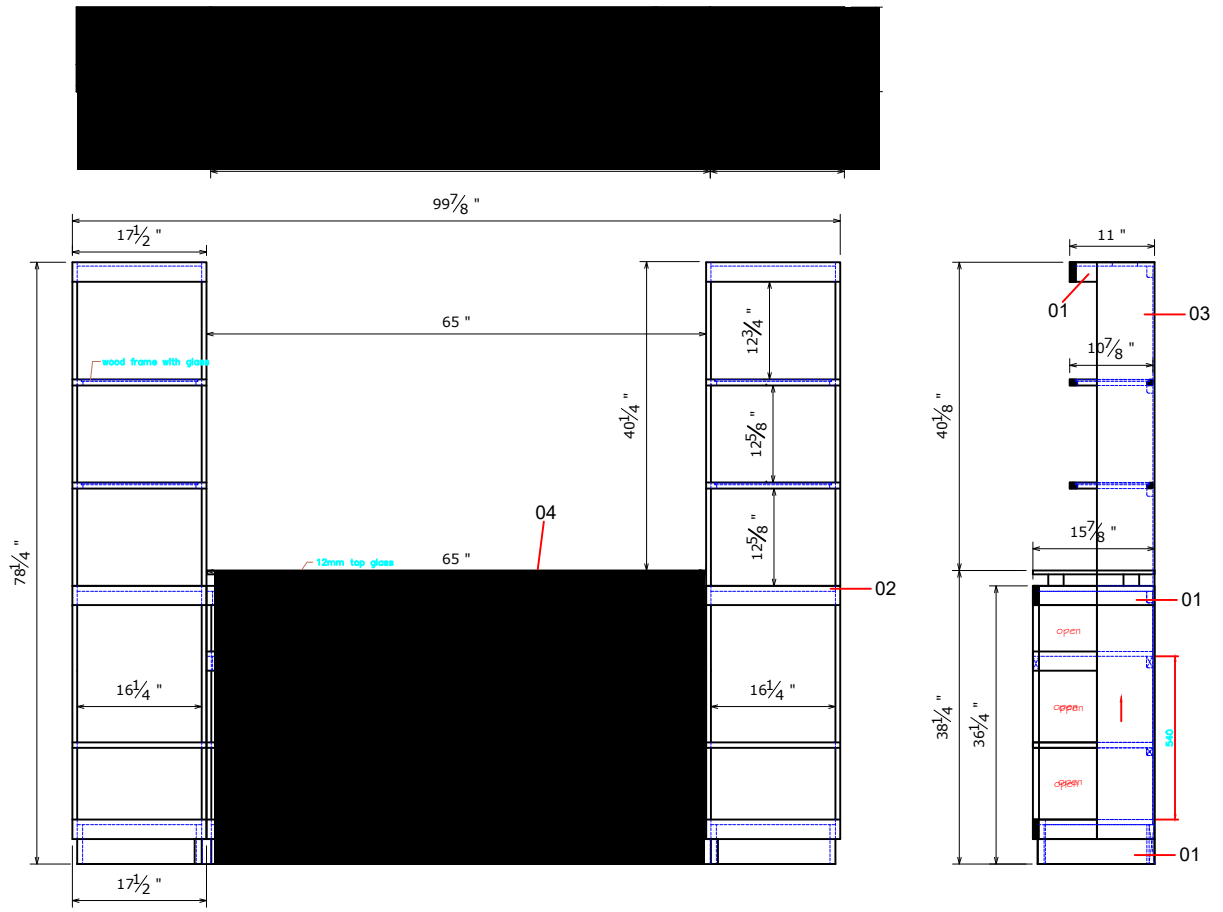


ZCEL-1465 / ZCEL-3000 PRODUCT SHEET

SKU#	DESCRIPTION	PRODUCT DIMENSIONS			CU.FT.
		W	D	H	
ZCEL-1465	Celino 65" TV Cart	65"	15.875"	38.25"	00
ZCEL-3000	Celino Curio Pier Cabinets	17.5"	15.875"	78.25"	00

MATERIALS LIST			
NO.	DESCRIPTION	NO.	DESCRIPTION
01	Solid poplar	03	PB with birch veneer
02	MDF with Birch veneer	04	Glass



ZCEL-1465 — Celino 65" TV Cart
 ZCEL-3000 Celino Curio Pier Cabinets